

No. of Printed Pages : 8

J-13

3470



Register Number

--	--	--	--	--	--	--	--

SSLC

8044876

Language – Part B – ENGLISH – Paper - II

Time Allowed : 2½ Hours]

[Maximum Marks : 100

- Instructions :**
- (1) Check the question paper for fairness of printing. If there is any lack of fairness, inform the Hall Supervisor immediately.
 - (2) Use Black or Blue ink to write.

Note : This question paper contains **four** sections.

SECTION - I

(NON - DETAILED : 35 MARKS)

1. Fill in the blanks with the appropriate phrases given below to form a complete meaningful paragraph : 5x1=5

Kumar was an (i) young man. He was living in a very comfortable and (ii) apartment (iii). One day he stood staring out through the window. But he felt (iv) in his heart. His thought drilled to his house which was in (v).

 - (i) a narrow congested street
 - (ii) an emptiness
 - (iii) fully furnished
 - (iv) intelligent and enterprising
 - (v) in New York

2. Read the following sentences and identify the character/speaker. 5x1=5
 - (i) "Enough is Enough"
 - (ii) "No, we'll ring the fire brigade"
 - (iii) "Oh Ma! How I miss you"
 - (iv) "Can I keep him, Mom?"
 - (v) "More Snuff"

[Turn over

3470

2

3. Match the following :

5x1=5

- (a) Shelly - Celine's daughter
(b) Amandine - the three thieves
(c) 'V' shaped formation - Felt like a princess
(d) Mum - a school boy
(e) Three hefty men - flying birds

4. Complete the following sentences choosing the correct answer from the options given below :

5x1=5

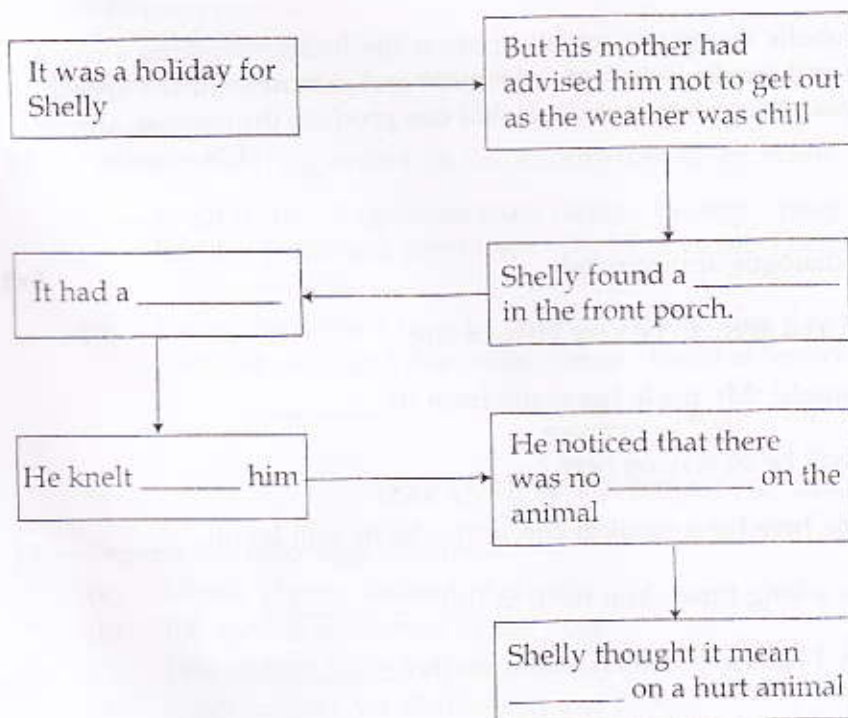
- (i) The artist was engaged to paint a _____.
(a) mural (b) scenery
(c) portrait (d) building
- (ii) The narrator's brother was a _____.
(a) student (b) teacher
(c) tinker (d) doctor
- (iii) Kumar's outstanding performance at college had gained him a wonderful career at _____.
(a) the LIC (b) the BSNL
(c) an MNC (d) the NLC
- (iv) Mum had seen a piano before _____.
(a) in the Church
(b) at the Catholic Kindergarten
(c) at the shop
(d) in the neighbour's house
- (v) Hubert was _____ years old.
(a) eight (b) twelve
(c) fifteen (d) fourteen

5. Read the passage given below and answer the questions that follow. 5x1=5

It turned out that since returning from the war, Dad had been unable to find a job. At that time I was too young to understand why anyone would get sad and worried about that, because I thought I would be as happy as a cat in a fish shop to have such a long holiday. Then, a few weeks later, I observed the same big horse pulling a cart down our street and it clip clopped right up into our drive way. Soon two men began to load Mum's Piano onto the wagon while all the neighbours gathered around to watch. Mum stayed in the Kitchen, sobbing. She was a proud person and couldn't bear to see her beloved Piano sitting on top of the wagon. Dad sat out in the backyard next to the Chickenshed, looking sadder than I had ever seen him.

- (i) How was the Piano being taken away ?
- (ii) Why was Mum sad and sobbing ?
- (iii) Where was Dad sitting ?
- (iv) Why was Dad looking sadder than ever ?
- (v) What did the author think about his father staying at home without a job ?

6. Study the given mind map and fill in the incomplete details : 5x1=5



[Turn over

3470

4

7. Answer in a paragraph *any one* of the following questions :

1x5=5

- (a) How did the encounter bring the brothers closer to each other ?
- (b) Narrate the story "Sam" in your own words.
- (c) Narrate the clever manner in which Hubert outwitted the thieves.

SECTION - II

(LANGUAGE FUNCTIONS : 15 MARKS)

8. Make notes of the following passage and prepare a summary using the notes :

5+5=10

The use of tobacco can also seriously impair the user's health. It can lead to cancer, heart attack, strokes and chronic lung disease. Babies born to mothers who smoke are often smaller and not healthier than babies born to mothers who do not smoke. Bronchitis and pneumonia are serious illnesses common in babies born to parents who smoke, but less common in babies born to parents who do not smoke. Babies whose parents smoke also have a greater risk of suffering from chronic lung disease after they become adults.

We know that alcoholic beverages actually poison the body. Drinking alcohol causes changes in mood and results in lack of judgement and restraint, slurred speech, staggering and clumsiness. Larger amount of alcohol can produce drowsiness, stupor and even death.

(128 words)

9. Complete the following dialogue appropriately :

5x1=5

Ganesh : Hi Dinesh! You seem to be very busy of late.

Dinesh : Oh, yes Ganesh! My uncle has come from (i) _____

Ganesh : How long will he be staying here ?

Dinesh : He has come here for a medical check-up. So he will be (ii) _____

Ganesh : That's quite a long time. You have to (iii) _____

Dinesh : Yes, Luckily I have my holidays now, so (iv) _____

Ganesh : Ok Dinesh ; I hope your uncle (v) _____

SECTION - III
(COMMUNICATIVE SKILLS : 15 MARKS)

10. Write a dialogue with at least five utterances between the Headmaster and an old student who has come to get a testimonial from the Headmaster. 5
11. Rani wrote a letter to her friend Revathy describing her visit to a holiday resort. She started her letter but could not complete it. Complete the content of her letter in about 100 words. 5

14A 3rd Street
K.K.Nagar
A.City
2nd October 2012

My dear Revathy,

.....
.....
.....

Your's lovingly,
Rani

Address on the envelope
To
K.Revathy,
15, A.V.R. Road,
B.City, Pin xxxxxx

12. Prepare an advertisement on the information given below : 5
- (a) Fresh fruits - Vegetables from farms - healthy - juicy- tasty - low price - care for health - fruits and vegetables - 59, Mint street, Trichy.
- OR
- (b) Colourful toys - novel - lovely, safe to use - non toxic - handy etc - 10% discount - sale for 3 days only. Venue - Guild of Service Hall - Egmore - Chennai - 8.

SECTION - IV
(EXPANSION OF IDEAS : 35 MARKS)

13. Expand the following headlines : 5x1=5
- (a) Mobile phones banned in schools
- (b) 108 service welcomed by the poor
- (c) Tata motors hikes vehicle prices
- (d) Heart surgery for Children at low cost
- (e) SBI releases new coin - Big temple centenary

[Turn over

3470

6

14. Study the pie-chart and answer the questions given below :

5x1=5

Annual Expenditure of Mr. Krishnan's family is Rs. 48000



- (i) Mr. Krishnan spends equally on _____.
- (a) food and education (b) house rent and clothing
 (c) clothing and miscellaneous (d) taxes and food
- (ii) State whether the following statement is **true or false** :
 Sum of the expenditures on food and clothing is equal to the sum of the expenditures on house-rent and the money saved.
- (iii) The difference between the expenses on taxes and house rent is equal to the sum of the _____.
- (a) expenses on food and house rent
 (b) expenses on food and savings
 (c) expenses on clothing and house rent
 (d) expense on miscellaneous items
- (iv) The amount saved by Krishnan is _____.
- (a) 4000 (b) 3360 (c) 2500 (d) 4800
- (v) The least percentage of Mr. Krishnan's income is directed towards _____.
- (a) his savings (b) food
 (c) clothing (d) miscellaneous expenses

15. Write a paragraph using any of the following outlines in about 100 words.

5

(a) Delay is dangerous - postpone things - work gets accumulated - try to finish in a hurry - slipshod - quality gets affected - earn a bad name - don't give room to laziness - prompt action - fetches good returns.

OR

(b) National integration - need of the hour - dividing forces - language, religion, etc. - develop tolerance - give up fights - encourage broadmindedness - patience - courteous behavior - patriotism - unity results in victory - peace - happiness.

16. Match the following products and slogans appropriately :

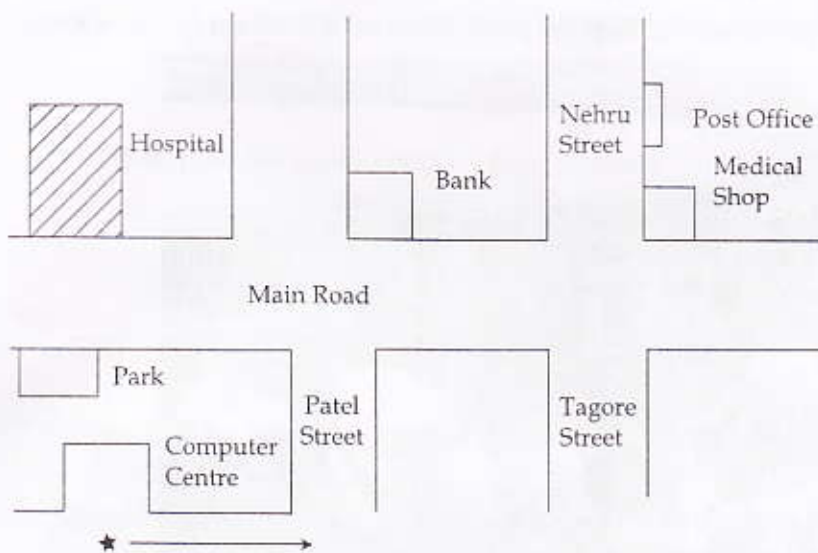
5x1=5

- (a) eraser - handle with care
- (b) air conditioner - gives clear vision
- (c) lens - erases everything but the past
- (d) glass - for dashing and smashing looks
- (e) dress - keeps cool

17. Observe the map given below and write the instructions required :

5

You are near the computer centre. A stranger asks you to direct him to the post office. Guide him with your directions in about 50 words.



18. Read the poem given below and complete its paraphrase with suitable words or phrases in the given blanks.

5x1=5

I took a piece of plastic clay
 And idly fashioned it, one day,
 And as my fingers pressed it, still
 It moved and yielded to my will
 I came again, when days were passed
 That bit of clay was hard at last
 The form I gave it, still it bore,
 And I could change that form no more.

The artist took a piece of (i). He pressed it with (ii). It moved and gave in to (iii). Finally he moulded it into a statue and went away. He returned after many days. The clay was now (iv). It still bore the form he had given. But he (v) that form no more.

[Turn over

3470

8

19. (a) Translation :

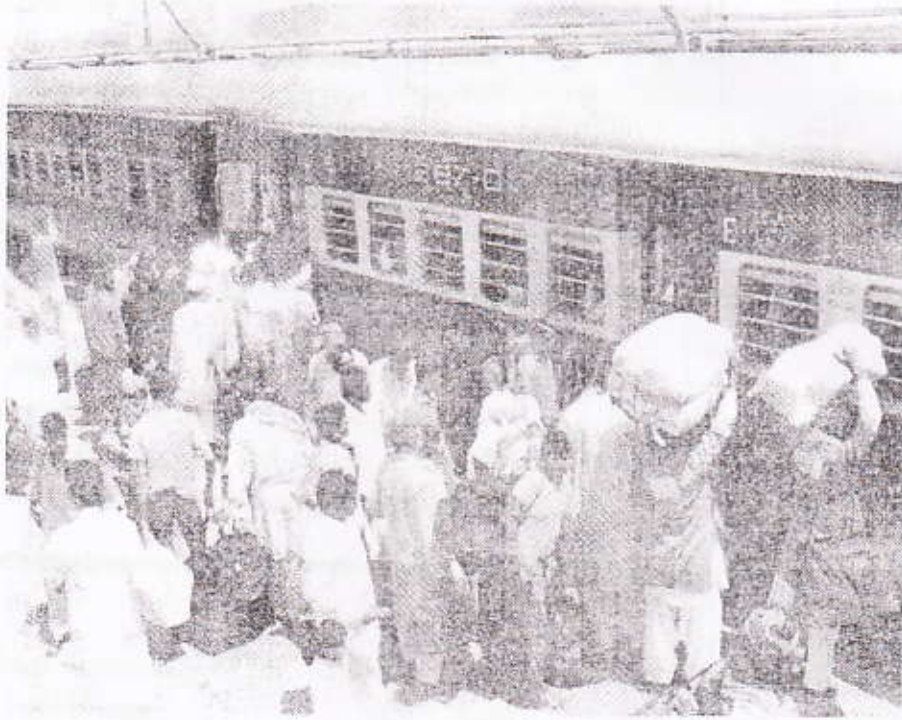
5

A foreigner wants to go to a super market. As he did not know Tamil, help him to understand the instructions through your translation.

பிரதான சாலையில் வடக்கு நோக்கி நேராகச் செல்லவும். சிறிது தூரம் கடந்த பின்னர் இடதுபுற சந்தில் திரும்பவும். "மணி உணவு விடுதி" க்கு அடுத்து 'காந்தி' சாலையை அடைவீர்கள். அங்கிருந்து நேர்ப்பாதையில் சென்றால் இரண்டு நிமிடங்களில் சாலையின் வலதுபுறத்தில் பல்பொருள் அங்காடியை சென்றடைவீர்கள்.

OR

(b) Look at the picture given below. Express your views on it in about five sentences.



- o o o -